

STREET STORY

Need to collect data within a specific area? Follow the steps below to create a custom boundary. This feature can help provide supplemental data for grant applications and give insight to your overall transportation safety efforts.

Part A: Preparation

1. Go to this link: <https://streetstory.berkeley.edu/custom.php>
2. Select the county and/or city in which you wish to retrieve data. You may also enter an address.

1. Zoom in to your area of interest

Select a county and/or city.

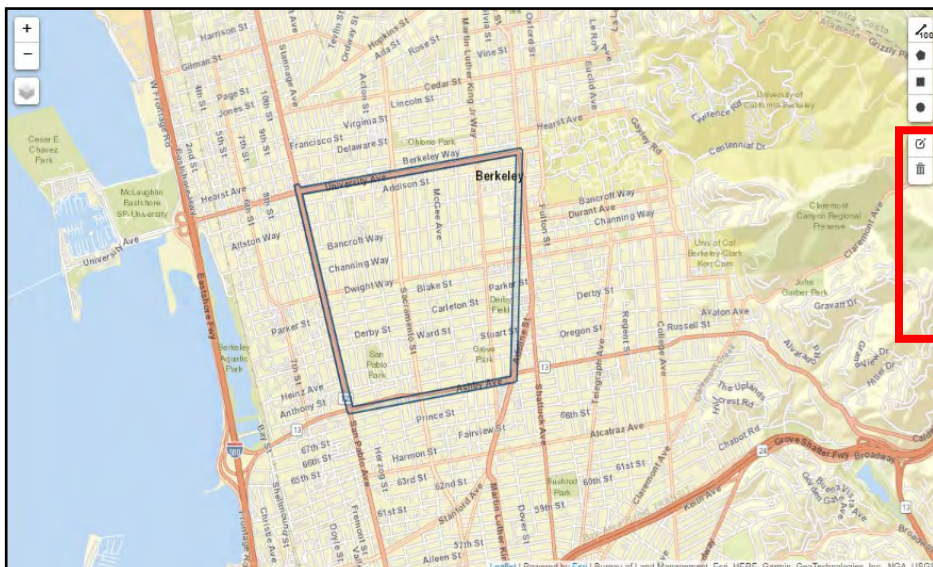
County:

City:

Or enter an address:

Optionally, you can skip this step for the statewide view.

3. Use the drawing tool on the upper right hand side of the map to create a boundary. Choose either the Polyline, Polygon, Rectangle, or Circle tool.



4. Enter your project name; this step is required to create your custom boundary.

3. Enter your project name (as in your application title)

Please name your area for the future reference.

5. Optionally, enter start and end date for collecting data in your area.

4. (Optional) Enter a due date for the feedback

Please enter the date you wish to collect data for your area by.



Optionally, enter your email address to receive a link to your boundary information. A link for editing will be sent to the email address*.

Here is the link for your area. You can share this link and QR code for your project. Or, you can generate a one-page pdf by clicking the print button below.




6. Create the boundary. Once you click create, a link and QR code will be generated for your project. Click on Generate PDF to create an image for your custom boundary area and link.


STREET STORY: Custom Boundary Sample
Give Your Input on Safer Streets

You are receiving this invitation because your city or county is applying for funds from Caltrans' Active Transportation Program to help make walking and biking safer and more pleasant in this area. Your city or county would like to get your input on concerns you have, as well as ideas for improvements.

Please submit your feedback by May 25th, 2022.



Please use the link or use the QR code below to provide your feedback on Street Story:
<https://streetstory.berkeley.edu/custom/cus94>



Questions? Please email streetstory@berkeley.edu.

Berkeley SafeTREC

7. Share with your community by either the link generated or by pdf printout.
8. If you provided your email in Step 6, you will be able to edit the custom boundary:
 - a. Refer to the email you recieved when you first created the boundry. Click the link that contains the “edit” expression,:

You can edit your area using this link below:
<https://streetstory-test.berkeley.edu/es/custom.php?edit=gft217>

- b. The link will take you to the Street Story webpage but a pop-up window will ask for the email address you used to create the custom boundary.



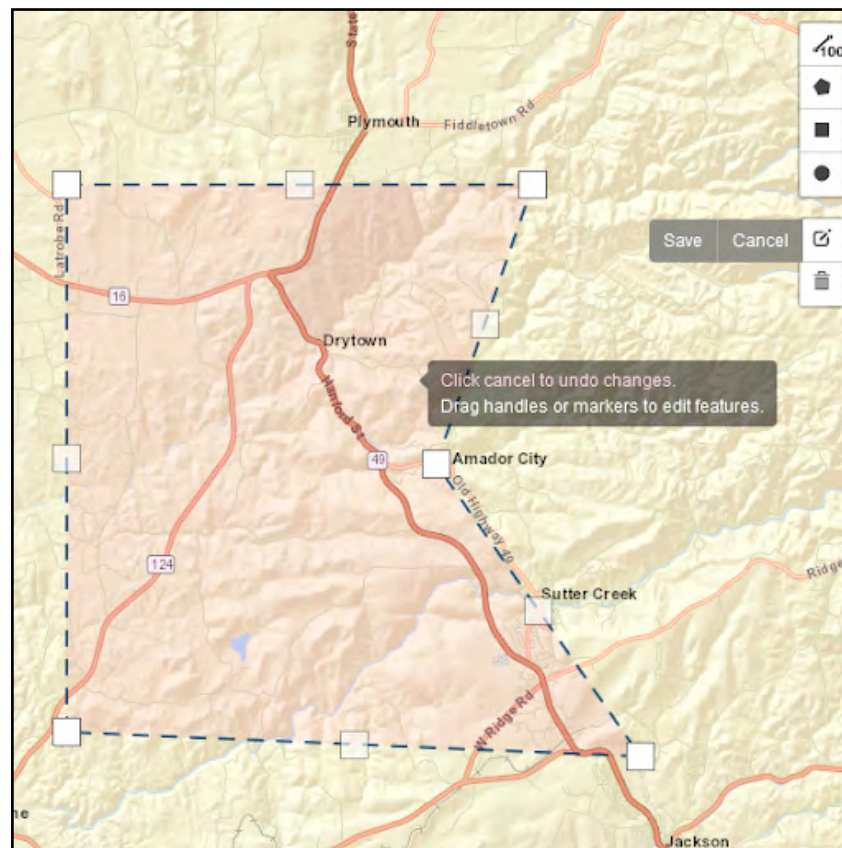
Email address

Please verify your email address.

Enter your email

Continue

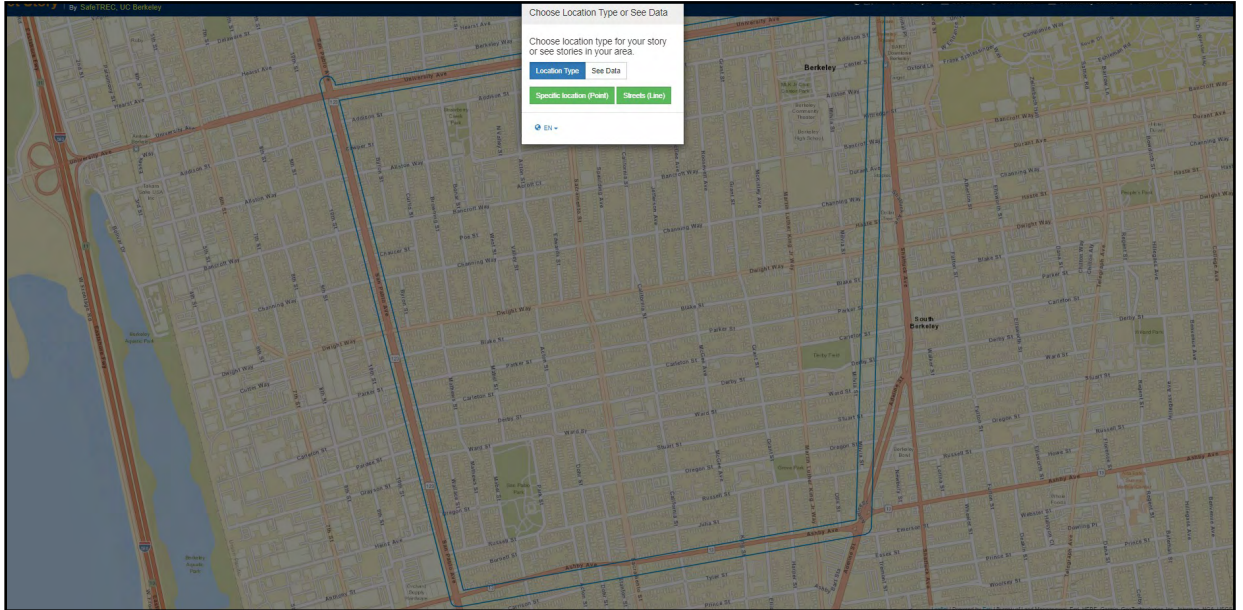
- c. Once verified, the map will center on your custom boundary with editable features. Using the edit toolbar on the upper right side of the map, you can edit vertices or draw a new one instead.



- d. When you are done editing, click on the green “Save Changes” button above the map. The new boundary will be available to anyone using the same custom boundary link.

Part B: Reporting and Analysis

1. Go to the link you generated from Part A, step 5. Street Story tool will center on your custom project area.



2. Move the blue slider to “See Data”, then select “Click here to see data for selected areas”, (*Fig. 1*). You will be directed to the “Reports” page, which will show maps and tables about the Street Story reports made within the boundary you have created and the demographics of the people who have made these reports. You have the option to narrow down the data by report date, (*Fig. 2*).

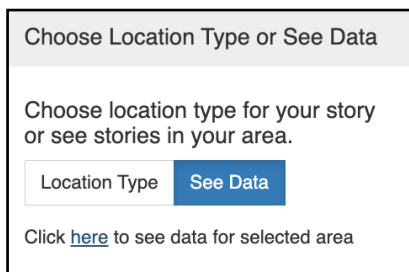


Figure 1.

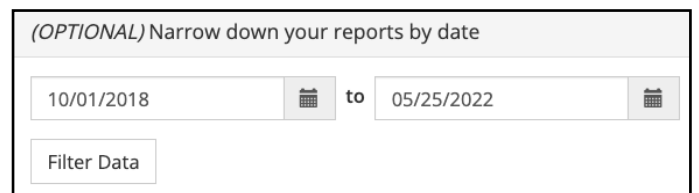
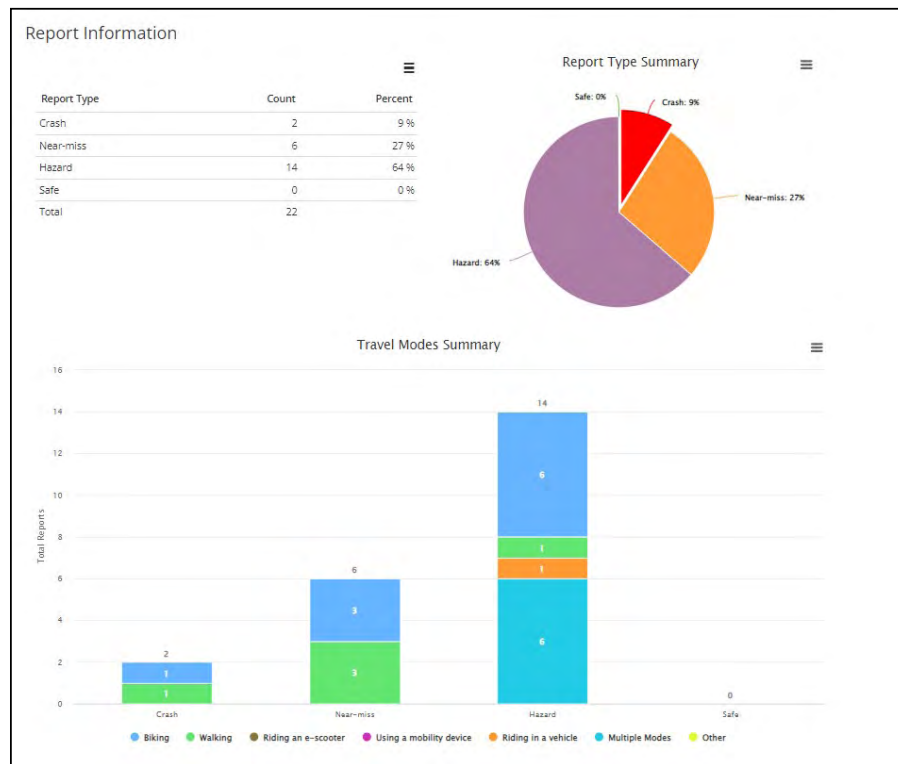


Figure 2.

3. To download a specific map or table, select the icon in the right upper corner of the visualization or the “download” button on the map. Please note that a custom boundary may be created and distributed in both **English** and **Spanish**.

Print Report

Download Data



For further instruction on using Street Story, please visit streetstory.berkeley.edu and click on the “Starter Guide” under resources or email us at streetstory@berkeley.edu.

Need help with creating a boundary or navigating the tool? Email us at streetstory@berkeley.edu for all inquiries. We also provide training for all your community needs!

Berkeley SafeTREC

SAFE TRANSPORTATION RESEARCH AND EDUCATION CENTER



Funding for this program was provided by a grant from the California Office of Traffic Safety, through the National Highway Traffic Safety Administration.